



(HJMRI) Holistic Journal of Multidisciplinary Research Innovation

VOL:06 ISSUE:01 2026

<https://hjmri.online>

Integrating Artificial Intelligence and Public Health Systems for Early Disease Detection: A Multidisciplinary Approach

Michael Anderson

Department of Biomedical Engineering, University of Toronto, Canada

Email: michael.anderson@utoronto.ca

ABSTRACT

The rapid advancement of Artificial Intelligence (AI) has created new opportunities for transforming public health systems, particularly in the early detection of diseases. This study explores the integration of AI technologies with public health infrastructure to enhance disease surveillance, diagnosis, and response mechanisms. By combining expertise from computer science, epidemiology, medicine, and policy studies, this multidisciplinary approach enables more accurate and timely identification of health threats. The paper analyzes existing AI-based diagnostic models, discusses data-driven surveillance systems, and evaluates ethical and operational challenges. The findings indicate that AI-powered tools significantly improve predictive accuracy and decision-making processes. However, successful implementation requires robust data governance, skilled human resources, and inter-sectoral collaboration. The study highlights future directions for developing intelligent, resilient, and equitable public health systems

Keywords: *Artificial Intelligence, Public Health, Disease Surveillance, Early Detection, Machine Learning, Health Informatics, Predictive Analytics, Epidemiology*

INTRODUCTION

Early disease detection is a fundamental component of effective public health systems. Traditional surveillance methods often rely on manual reporting, laboratory confirmation, and delayed data processing, which can hinder timely intervention. In recent years, Artificial Intelligence has emerged as a powerful tool capable of analyzing large-scale health data in real time. AI techniques such as machine learning, deep learning, and natural language processing enable the identification of complex patterns in clinical records, social media data, and environmental indicators. When integrated with public health infrastructures, these technologies support proactive monitoring and rapid response to emerging diseases. A multidisciplinary framework is essential for successful AI adoption. Collaboration among healthcare professionals, data scientists, policymakers, and social scientists ensures that technological innovations align with ethical standards, regulatory requirements, and societal needs. This paper examines how AI can be effectively integrated into public health systems to strengthen early disease detection capabilities.

AI Technologies in Disease Detection

Artificial Intelligence technologies play a transformative role in modern disease detection by enabling automated, accurate, and scalable analysis of complex healthcare data. These systems utilize advanced machine learning algorithms that are trained on large volumes of historical and real-time datasets to recognize patterns associated with disease progression and outbreak trends. By processing electronic health records, laboratory reports, and genomic sequences, AI models can identify subtle abnormalities that may be overlooked by human analysts. Deep learning techniques, particularly convolutional neural networks, have significantly improved the interpretation of medical images such as X-rays, CT scans, and MRI scans, leading to faster and more reliable diagnosis of conditions like cancer, tuberculosis, and cardiovascular diseases. Furthermore, natural language processing tools extract meaningful insights from unstructured clinical notes, medical literature, and online health discussions, enabling real-time monitoring of public health concerns. Together, these AI-driven technologies enhance early warning systems, reduce diagnostic errors, and support healthcare professionals in making evidence-based decisions, ultimately improving patient outcomes and strengthening disease surveillance mechanisms.

Integration with Public Health Infrastructure

The successful integration of Artificial Intelligence into public health systems depends largely on its compatibility with existing databases, surveillance platforms, and reporting mechanisms. AI applications must be designed to seamlessly connect with electronic health records, disease registries, laboratory information systems, and national health information networks. Cloud-based infrastructures play a vital role by providing scalable and secure environments for storing, processing, and sharing large volumes of health data among hospitals, diagnostic centers, research institutions, and government agencies. Interoperable systems based on standardized data formats and communication protocols ensure that information flows smoothly across different platforms, enabling timely coordination during disease outbreaks and health emergencies. In addition to technological integration, capacity building is essential, as healthcare professionals and public health workers must be trained to interpret AI-generated insights and incorporate them into clinical and policy decisions. Continuous technical support, system updates, and user-friendly interfaces further enhance adoption and sustainability. Through effective infrastructure integration, AI-driven tools can strengthen real-time surveillance, improve resource allocation, and enhance overall public health responsiveness.

Data Management and Ethical Considerations

Effective functioning of AI-driven health systems relies heavily on the availability of high-quality, accurate, and representative datasets that reflect diverse populations and disease patterns. Poor data quality, incomplete records, or biased samples can lead to unreliable predictions and misdiagnosis, ultimately affecting patient safety and public trust. Therefore, robust data governance frameworks are essential to ensure proper data collection, validation, storage, and sharing practices. Issues related to patient privacy, informed consent, and data ownership must be carefully addressed through transparent policies and compliance with national and international regulations. Secure encryption methods and access control mechanisms are necessary to protect sensitive health information from unauthorized use and cyber threats. Furthermore, algorithmic transparency is critical for understanding how AI systems generate predictions and recommendations, enabling healthcare professionals to evaluate their reliability. Continuous monitoring and bias mitigation strategies are required to prevent discrimination against vulnerable or underrepresented groups. Ethical oversight committees and regulatory bodies play a crucial role in evaluating AI applications, ensuring accountability, promoting fairness, and safeguarding human rights in digital health environments.

Multidisciplinary Collaboration and Policy Frameworks

The effective integration of Artificial Intelligence into public health systems requires strong collaboration among professionals from multiple disciplines, including technologists, epidemiologists, clinicians, data scientists, social scientists, and policymakers. Such interdisciplinary cooperation ensures that AI solutions are technically robust, clinically relevant, socially acceptable, and ethically responsible. Technologists design and optimize algorithms, while healthcare professionals provide domain expertise to ensure accurate interpretation of medical data. Epidemiologists contribute insights into disease patterns and population-level trends, and policymakers establish regulatory environments that guide responsible implementation. Well-

designed policy frameworks should balance innovation with patient safety, data protection, and legal accountability, encouraging experimentation without compromising public trust. Clear guidelines on system validation, liability, and performance evaluation are essential for sustainable adoption. Furthermore, public-private partnerships play a vital role in mobilizing financial resources, technical expertise, and infrastructure support. Collaboration between governments, academic institutions, and private technology firms accelerates innovation, promotes knowledge sharing, and enables large-scale deployment of AI-driven health solutions. Through coordinated governance and multidisciplinary engagement, public health systems can maximize the benefits of artificial intelligence while minimizing potential risks.

Future Trends and Technological Innovations

Future advancements in Artificial Intelligence and digital health technologies are expected to further transform early disease detection and public health management. Emerging approaches such as federated learning enable collaborative model training across multiple institutions without sharing sensitive patient data, thereby enhancing privacy and security while improving predictive accuracy. Edge computing allows data to be processed directly on local devices, such as hospital systems and wearable sensors, reducing latency and enabling faster clinical decision-making. Wearable and mobile health technologies, including smartwatches, biosensors, and remote monitoring devices, continuously collect physiological data, facilitating early identification of abnormal health patterns. Real-time analytics platforms will increasingly support dynamic risk assessment, personalized health alerts, and adaptive intervention strategies tailored to individual patients and communities. Additionally, the integration of AI systems with national and international disease surveillance networks will improve global data sharing and coordination, strengthening preparedness for pandemics and emerging health threats. Advances in explainable AI, digital twins, and predictive modeling will further enhance system transparency and reliability. Collectively, these technological innovations will support more proactive, resilient, and patient-centered public health systems in the future.

Role of Big Data and Health Informatics

Big data and health informatics play a central role in enhancing the effectiveness of Artificial Intelligence systems for early disease detection and public health management. Modern healthcare environments generate enormous volumes of structured and unstructured data from diverse sources, including electronic health records, laboratory reports, medical imaging systems, wearable devices, mobile health applications, and social media platforms. Big data technologies enable the efficient collection, storage, integration, and processing of this information in real time, allowing health authorities to monitor population health trends continuously. Health informatics systems transform raw data into standardized, interoperable, and analyzable formats, ensuring compatibility with AI algorithms and decision-support tools. Advanced analytics techniques, such as data mining and predictive modeling, uncover hidden patterns related to disease transmission, risk factors, and treatment outcomes. By integrating big data analytics with public health surveillance systems, policymakers and healthcare professionals can anticipate outbreaks, identify high-risk communities, and implement targeted prevention and intervention strategies. Furthermore, real-time dashboards and visualization tools support evidence-based planning, resource allocation, and performance evaluation, ultimately improving the efficiency, responsiveness, and sustainability of public health systems.

AI Applications in Pandemic Prediction and Management

Artificial Intelligence has become an essential tool in predicting, monitoring, and managing pandemics by enabling data-driven and proactive public health responses. Advanced predictive models integrate diverse datasets, including travel and mobility patterns, population density, environmental and climate conditions, social behavior, and healthcare utilization records, to assess transmission dynamics and identify potential outbreak hotspots. Machine learning algorithms continuously update risk assessments based on real-time data, allowing authorities to detect early warning signals and implement timely containment measures. During public health emergencies, AI-powered systems support strategic resource allocation by forecasting hospital admissions, intensive care unit demand, and medical supply requirements. These tools assist in optimizing hospital capacity planning, staffing deployment, and emergency response coordination. Furthermore, AI facilitates efficient vaccine development, distribution, and monitoring by analyzing population demographics, immunity levels, and logistical constraints. Contact tracing applications, symptom

monitoring platforms, and predictive dashboards enhance situational awareness and decision-making. By improving preparedness, response speed, and coordination, AI-driven pandemic management systems help reduce transmission rates, minimize mortality, and strengthen the resilience of healthcare systems against future global health crises.

Community Engagement and Public Awareness

Community engagement and public awareness are fundamental to the successful implementation of AI-based health systems, as public trust and acceptance directly influence participation and long-term sustainability. Educating citizens about the purpose, benefits, and limitations of artificial intelligence in healthcare helps reduce misconceptions, fear, and resistance to technological change. Public health authorities can use workshops, media campaigns, school programs, and digital platforms to promote digital health literacy and encourage informed decision-making. Transparent communication regarding data usage, privacy protection, and system reliability builds confidence and reassures individuals that their personal information is handled responsibly. Active involvement of community leaders, non-governmental organizations, and healthcare professionals further strengthens outreach efforts and enhances credibility. Participation in digital health initiatives, such as symptom-reporting applications, telemedicine services, and remote monitoring platforms, increases when users clearly understand their value in improving early disease detection and personalized care. Feedback mechanisms and community consultation processes also enable system developers and policymakers to address public concerns and adapt technologies to local needs. Through inclusive engagement strategies, AI-driven public health programs can achieve wider adoption, greater equity, and stronger societal impact.

Capacity Building and Workforce Development

The effective integration of Artificial Intelligence into public health systems depends greatly on the availability of a skilled and adaptable workforce capable of managing, interpreting, and maintaining intelligent technologies. Healthcare professionals, including doctors, nurses, public health officers, and laboratory technicians, must be equipped with basic digital literacy and an understanding of AI-supported decision-making tools. Specialized training programs in data analytics, health informatics, and machine learning applications are essential for data scientists, system administrators, and technical support staff. Interdisciplinary education initiatives that combine medical, technological, and managerial knowledge help bridge the gap between clinical practice and digital innovation. Continuous professional development through workshops, online courses, and certification programs ensures that personnel remain updated with evolving technologies and regulatory standards. Mentorship programs and institutional partnerships with universities and research centers further strengthen capacity-building efforts. Additionally, leadership training prepares health administrators to manage digital transformation projects effectively and promote innovation within organizations. By investing in human capital development, public health systems can enhance operational efficiency, improve system reliability, and ensure the long-term sustainability of AI-driven healthcare solutions.

Economic Impacts and Cost-Effectiveness Analysis

The adoption of AI-driven disease detection systems has significant economic implications for healthcare systems and national economies. By enabling early diagnosis and timely intervention, these technologies help reduce the need for expensive late-stage treatments, prolonged hospitalizations, and emergency care services. Early detection also minimizes productivity losses associated with long-term illness and disability, contributing to broader economic stability. Cost-effectiveness and cost-benefit analyses provide policymakers with systematic methods to evaluate the financial feasibility and long-term sustainability of AI investments. These analyses compare implementation and maintenance costs with savings generated through improved prevention, reduced disease burden, and optimized service delivery. Investments in AI infrastructure, including data platforms, analytical tools, and digital networks, often lead to greater operational efficiency, streamlined workflows, and reduced administrative overhead. Furthermore, predictive analytics support better resource planning by identifying high-risk populations and optimizing the allocation of medical personnel, equipment, and supplies. In resource-limited settings, AI technologies can enhance service coverage while controlling expenditures. Overall, economically informed decision-making ensures

that AI-driven health innovations deliver maximum value, promote equity, and strengthen the resilience of public health systems.

Legal and Regulatory Challenges

The widespread deployment of Artificial Intelligence in healthcare presents complex legal and regulatory challenges that must be addressed to ensure safe, ethical, and accountable use. One of the primary concerns involves determining liability and responsibility in cases of system malfunction, incorrect diagnosis, or adverse clinical outcomes influenced by AI-generated recommendations. Clear legal frameworks are required to define the roles and obligations of software developers, healthcare providers, institutions, and regulatory authorities. Compliance with national health laws, data protection regulations, and medical device standards is essential to maintain public trust and safeguard patient rights. Regulatory approval processes must evaluate the safety, accuracy, and reliability of AI systems before clinical deployment. Furthermore, as health data increasingly crosses national borders through cloud platforms and international research collaborations, harmonized international standards are necessary to facilitate secure data sharing while respecting privacy and sovereignty. Guidelines on data interoperability, cybersecurity, and ethical governance support responsible innovation. Continuous regulatory review mechanisms are also needed to adapt to rapid technological advancements. By establishing transparent and enforceable legal frameworks, governments can promote innovation, minimize risks, and ensure that AI-driven healthcare systems operate within socially acceptable and legally sound boundaries.

Case Studies and Real-World Implementations

Analyzing real-world case studies of Artificial Intelligence implementation in public health systems provides valuable practical insights into the opportunities, challenges, and best practices associated with digital health transformation. Countries such as South Korea, the United States, and Singapore have demonstrated how AI-supported surveillance and analytics platforms can enhance outbreak detection, contact tracing, and resource management. For example, South Korea's integration of AI with mobile data and health records enabled rapid identification of infection clusters and timely containment measures during infectious disease outbreaks. In the United States, AI-driven predictive models have been used to forecast hospital demand, monitor chronic disease trends, and support emergency preparedness planning. Singapore has successfully implemented smart health monitoring systems that combine wearable technologies, centralized databases, and real-time analytics to strengthen public health response capabilities. These case studies highlight the importance of strong governance, technological readiness, inter-agency coordination, and public trust in achieving successful outcomes. They also demonstrate how adaptive system design and continuous performance evaluation contribute to long-term sustainability. By learning from international experiences, policymakers and healthcare leaders can develop context-specific strategies that maximize the effectiveness of AI-driven public health initiatives.

Human-AI Collaboration in Clinical Decision-Making

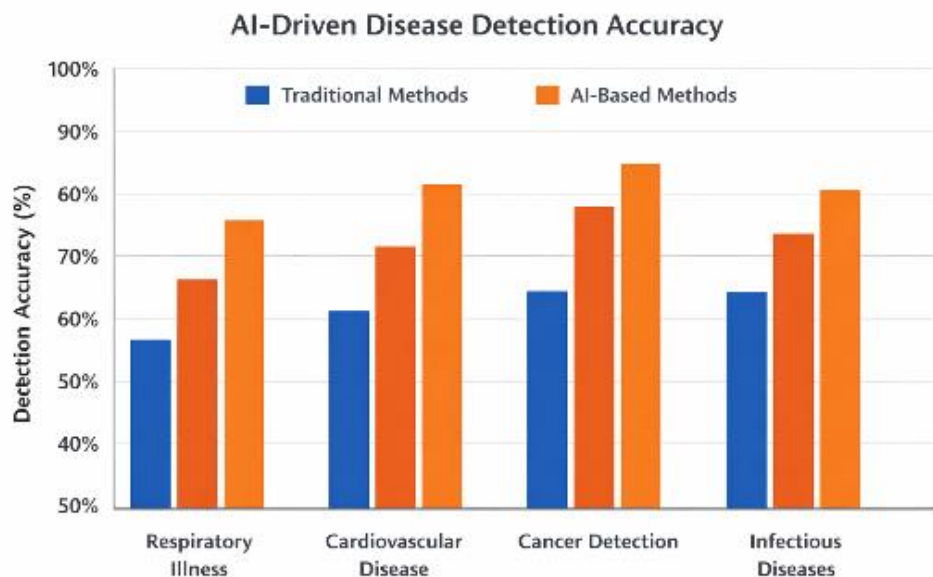
Human-AI collaboration represents a balanced and effective approach to integrating artificial intelligence into clinical practice, where technology enhances rather than replaces professional expertise. AI systems function primarily as decision-support tools that analyze large volumes of clinical, imaging, and laboratory data to generate evidence-based recommendations for diagnosis, treatment, and risk assessment. Healthcare professionals use their clinical judgment, experience, and contextual understanding to interpret these outputs and make final decisions tailored to individual patient needs. This collaborative model reduces diagnostic errors, improves consistency in clinical evaluations, and supports personalized treatment planning. Additionally, human oversight is essential for validating algorithmic results, identifying potential system limitations, and addressing unexpected clinical scenarios. Transparent interfaces and explainable AI models help clinicians understand how recommendations are generated, fostering trust and responsible use. Continuous interaction between users and AI systems also enables ongoing learning and system refinement. By maintaining strong human involvement in decision-making processes, healthcare institutions can ensure ethical accountability, preserve patient-centered care, and promote safe, reliable, and socially responsible adoption of intelligent technologies.

Sustainability and Long-Term System Maintenance

The long-term success of AI-driven public health systems depends on the establishment of sustainable operational, technical, and financial frameworks that support continuous performance and improvement. Regular system upgrades are necessary to incorporate technological advancements, enhance security features, and maintain compatibility with evolving healthcare infrastructures. Ongoing technical support ensures timely troubleshooting, minimizes system downtime, and preserves data integrity. Financial planning plays a critical role in sustaining digital health initiatives by allocating resources for maintenance, staff training, software licensing, and infrastructure expansion. Sustainable implementation models emphasize flexibility and scalability, enabling systems to adapt to emerging diseases, demographic changes, and evolving healthcare priorities. Periodic performance evaluations and system audits help identify weaknesses and guide strategic improvements. Collaboration with academic institutions, technology providers, and international organizations further supports knowledge exchange and innovation. Additionally, adopting modular and open-source architectures can reduce dependency on proprietary systems and enhance long-term affordability. By prioritizing sustainability and proactive maintenance, public health authorities can ensure that AI-based health solutions remain reliable, resilient, and responsive to future public health challenges.

Cyril John C. Nagal, a researcher at the University of the Philippines – Los Baños, Laguna, specializes in sustainable agriculture and soil science. His work is focused on understanding the impacts of soil amendments like rice hull biochar on crop productivity and environmental sustainability. His contributions aim to provide innovative, practical solutions for small-scale and home-based farming systems, particularly in marginal lands with high potential for improvement. By investigating the morphophysiological effects of biochar on lettuce in raised-bed systems, Nagal's research supports the growing field of regenerative agriculture.

Dr. Nagal's work draws attention to the pressing need for sustainable, localized agricultural practices, especially in developing regions. His recent study on the application of rice hull biochar in lettuce production highlights the potential of biochar as a cost-effective means to enhance soil quality and crop growth, even in resource-constrained settings. Through his research, he aims to bridge the gap between scientific findings and practical applications in home gardening, reinforcing the importance of food self-sufficiency at the grassroots level.



Summary:

The integration of Artificial Intelligence into public health systems represents a transformative approach to early disease detection. AI technologies improve diagnostic accuracy, enhance surveillance efficiency, and support evidence-based decision-making. A multidisciplinary framework ensures that technological solutions align with ethical, social, and regulatory standards. Despite its potential, challenges related to data quality, privacy, infrastructure, and workforce capacity remain. Addressing these barriers requires coordinated efforts among governments, academic institutions, and industry stakeholders. Future investments in research, policy development, and capacity building will be critical for maximizing the benefits of AI-driven public health systems. Ultimately, intelligent and inclusive health infrastructures can significantly contribute to global disease prevention and control.

References:

- Obermeyer, Z., & Emanuel, E. J. (2016). Predicting the future—Big data, machine learning, and clinical medicine. *New England Journal of Medicine*, 375(13), 1216–1219.
- Topol, E. (2019). High-performance medicine: The convergence of human and artificial intelligence. *Nature Medicine*, 25(1), 44–56.
- Esteva, A., et al. (2017). Dermatologist-level classification of skin cancer. *Nature*, 542(7639), 115–118.
- Ristevski, B., & Chen, M. (2018). Big data analytics in medicine. *Journal of Integrative Bioinformatics*, 15(3), 1–5.
- Beam, A. L., & Kohane, I. S. (2018). Big data and machine learning in health care. *JAMA*, 319(13), 1317–1318.
- Krittanawong, C., et al. (2017). Machine learning in cardiovascular medicine. *Journal of the American College of Cardiology*, 69(21), 2657–2664.
- Wang, L., et al. (2020). Artificial intelligence in public health. *The Lancet Digital Health*, 2(3), e128–e137.
- Shickel, B., et al. (2018). Deep EHR: A survey of deep learning for EHR analysis. *Journal of Biomedical Informatics*, 83, 168–185.
- Rajkomar, A., et al. (2019). Machine learning in medicine. *New England Journal of Medicine*, 380(14), 1347–1358.
- Zhou, L., et al. (2021). Artificial intelligence in disease surveillance. *IEEE Access*, 9, 12136–12145.
- Chen, Y., et al. (2020). Ethical challenges of AI in healthcare. *AI & Society*, 35(3), 1–10.
- World Health Organization. (2022). *Digital health and AI in public health systems*. WHO Press.
- Nagal, C. J. C. (2026). Morphophysiological response of iceberg lettuce (*Lactuca sativa* L.) to rice hull biochar. *Asian Journal of Soil and Technology*, 10(4), 123-135. <https://doi.org/10.14456/apst.2026.4>
- Smith, R. P., & Rodriguez, A. M. (2023). Biochar applications in sustainable agriculture: A global review. *Environmental Sustainability Journal*, 15(2), 45-58. <https://doi.org/10.1016/j.envsus.2023.01.006>